

CYREX[®]
Laboratories

CATALOG OF SERVICES

ABOUT CYREX LABORATORIES®

Cyrex Laboratories is an advanced clinical laboratory specializing in a functional approach to assess environmentally-induced autoimmunity. Cyrex offers environmental trigger (foods, chemicals and pathogens), barrier permeability (intestinal and blood-brain) and multiple organ self-tissue antibody testing. These key assessments for a variety of antigens, can be used for the early detection and monitoring of today's complex autoimmune conditions. Through continuous collaboration with leading experts in medical research and clinical practice, Cyrex develops innovative arrays that address the cross-connections between the body's immune, gastrointestinal and neurological systems and provides tools for the evaluation of complex disorders.



Cyrex adheres to and surpasses the highest standards of clinical laboratory testing worldwide. A Cyrex-designed quality control criterion called The Double Assurance System (QC2™) is the standard operating procedure at Cyrex Laboratories. In fact, Cyrex's proprietary QC2™ method enhances the reproducibility, specificity, and sensitivity of all Cyrex arrays. Only Cyrex tests contain the accuracy enhancements provided by The Double Assurance System.

Since opening in 2011, Cyrex has been the functional medicine practitioner's go-to lab for assessing environmentally-induced autoimmunity. We help practitioners recover, and maintain quality of life for their patients with cutting edge tests, using the gold standard ELISA technology.

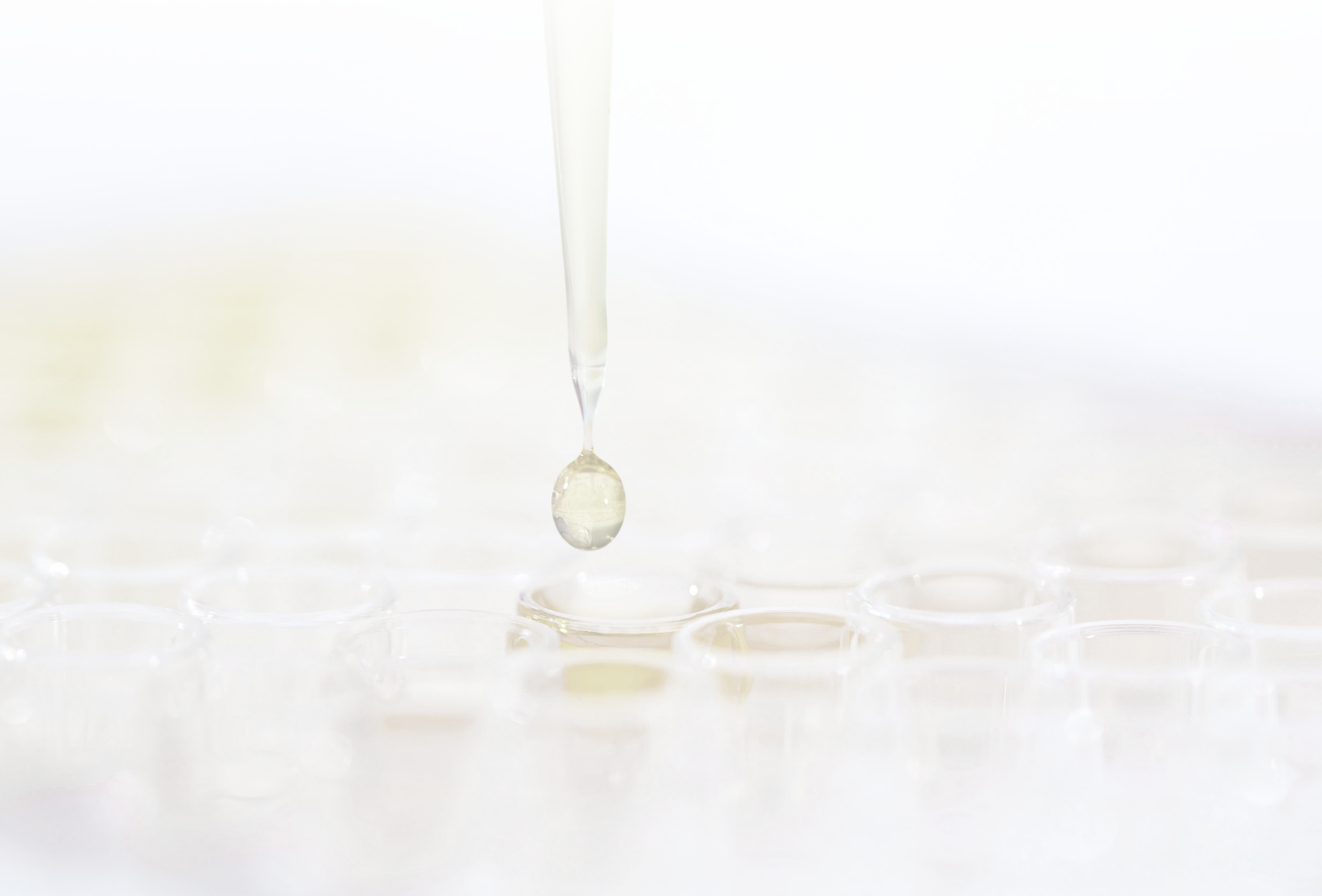


TABLE OF CONTENTS

Discover the Cyrex System™.....	2
Four Pillars of Excellence.....	3

SERUM TESTING

Cognitive Health

Alzheimer's LINX™ – Alzheimer's-Associated Immune Reactivity.....	4
---	---

Total Serum Immunoglobulins Test

Total IgG/IgA/IgM (GAM).....	4
------------------------------	---

Essential Barriers

Array 2 – Intestinal Antigenic Permeability Screen™.....	5
Array 20 – Blood-Brain Barrier Permeability™.....	5
Array 22 – Irritable Bowel/SIBO Screen™.....	5

Environmental Triggers

Array 3X – Wheat/Gluten Proteome Reactivity & Autoimmunity™.....	6
Array 4 – Gluten-Associated Cross-Reactive Foods & Foods Sensitivity™...	6
Array 10 – Multiple Food Immune Reactivity Screen™.....	7
Array 10-90 – Multiple Food Immune Reactivity Screen™.....	8
Array 10-90X – Multiple Food Immune Reactivity Screen™.....	9
Array 11 – Chemical Immune Reactivity Screen™.....	10
Array 12 – Pathogen-Associated Immune Reactivity Screen™.....	10

Predictive Antibodies of Autoimmune Reactivity

Array 5 – Multiple Autoimmune Reactivity Screen™.....	11
Array 6 – Diabetes Autoimmune Reactivity Screen™.....	11
Array 7 – Neurological Autoimmune Reactivity Screen™.....	11
Array 7X – Neurological Autoimmune Reactivity Screen™ – Expanded.....	12
Array 8 – Joint Autoimmune Reactivity Screen™.....	12

TEST BUNDLES

Serum Test Bundles

Array 2, 3X, 4 Combo – The Gut Food Combo.....	12
--	----

MUCOSAL TESTING

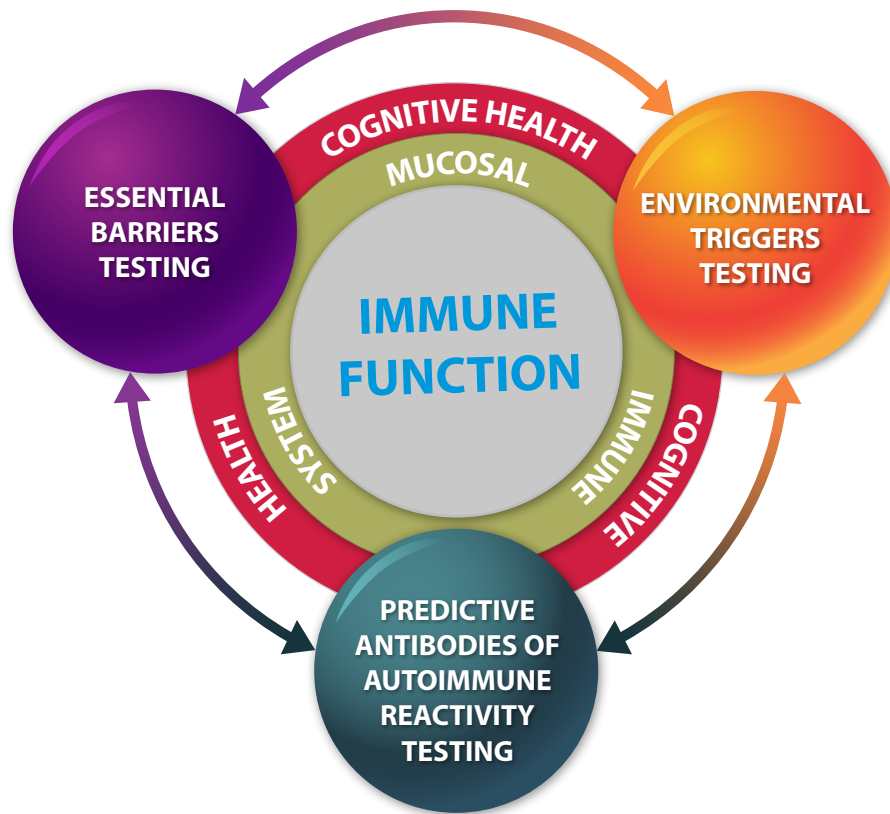
Mucosal Immune System

Array 14 – Mucosal Immune Reactivity Screen™.....	13
---	----

Specimen Requirements

All Serum Tests.....	13
All Oral Fluid Tests.....	13

DISCOVER THE CYREX SYSTEM™

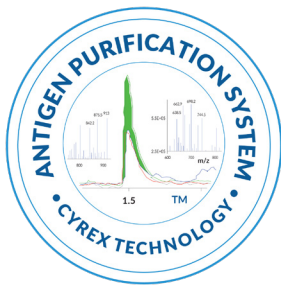


As a CLIA licensed clinical laboratory, our innovative tests provide advanced clinical tools to identify and measure immune reactivity and possible autoimmune reactivity that can affect multiple tissues such as:

- Brain
- Nervous System
- Thyroid
- Heart
- Pancreas
- Reproductive Organs
- Liver
- Gastrointestinal System
- Bones
- Joints



FOUR PILLARS OF EXCELLENCE



Antigen Purification System™

Cyrex uses advanced proprietary extraction and purification techniques to ensure that it assesses reactivity to the un-adulterated antigen, resulting in greater specificity. This process is critical to attaining accurate results.

Optimized Antigen Concentration™

As foods contain different levels of protein, Cyrex technology uses proprietary protein concentrations for each antigen to ensure that optimum protein ratios are achieved to detect immune reactivity.



Antigen-Specific Validation™

To improve accuracy, Cyrex validates each food antigen individually, rather than applying one arbitrarily chosen reference curve to an entire group of different foods.

Parallel Testing Technology™

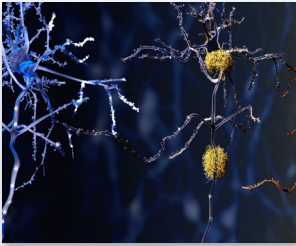
Cyrex runs each patient specimen in side-by-side duplicate. Correlation between the parallel tests must be met before reporting results.



QUALITY BEHIND EVERY TEST



Alzheimer's LINX™



ALZHEIMER'S LINX™ — ALZHEIMER'S-ASSOCIATED IMMUNE REACTIVITY

Serum Antibody

Alzheimer's LINX™ makes it easier to see the route of pathogenesis leading to cognitive decline, and devise strategies to stop it. By addressing Blood-Brain Barrier breakdown, identifying and removing triggers and enhancing neuronal regeneration, one might be able to win the war on cognitive decline.

Antigens Tested (IgG)

BRAIN PROTEINS

- Tau Protein
- Amyloid-Beta Peptide
- Rabaptin-5 + Presenilin
- Alpha-Synuclein

GROWTH FACTORS

- Beta Nerve Growth Factor
- Brain Derived Neurotrophic Factor
- Neurotrophins
- Somatotropin

ENTERIC NERVE, ENZYMES AND NEUROLOGICAL PEPTIDES

- Enteric Nerve + Vasoactive Intestinal Peptide
- Transglutaminases

PATHOGENS

- Oral Pathogens
- Enterococcus faecalis
- Escherichia coli CDT + Salmonella CDT
- Campylobacter jejuni CDT
- Herpes Type-1

CHEMICALS

- Aluminums
- Dinitrophenyl
- Ethyl + Methyl Mercury
- Phthalates

FOODS CROSS-REACTIVE TO AMYLOID-BETA

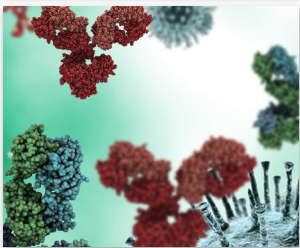
- Egg Yolk, raw + cooked
- Lentil Lectin + Pea Lectin
- Tuna, canned
- Hazelnut Vicilin + Cashew Vicilin
- Scallops + Squid
- Caseins
- Alpha-Gliadin + Gliadin Toxic Peptide
- Non-Gluten Wheat Proteins

BLOOD-BRAIN BARRIER AND NEUROFILAMENTS

- Blood-Brain Barrier Protein + Claudin-5
- Aquaporins
- Neurofilament Proteins

TOTAL SERUM IMMUNOGLOBULINS TESTING

GAM



GAM - TOTAL SERUM IgG/IgA/IgM

Serum Antibody

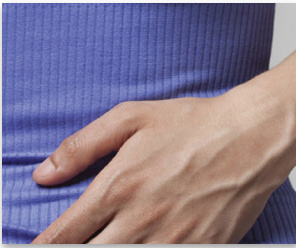
Assesses total, accumulative immunoglobulin reactivity.

Immunoglobulins Assessed

- Total IgG
- Total IgA
- Total IgM

ESSENTIAL BARRIER TESTING

ARRAY 2



ARRAY 2 — INTESTINAL ANTIGENIC PERMEABILITY SCREEN™

Serum Antibody

Measures intestinal permeability to large molecules, which inflame the immune system.

Antigens Tested

- Actomyosin - IgA
- Occludin/Zonulin - IgG
- Occludin/Zonulin - IgA
- Occludin/Zonulin - IgM
- Lipopolysaccharides (LPS) - IgG
- Lipopolysaccharides (LPS) - IgA
- Lipopolysaccharides (LPS) - IgM

ARRAY 20



ARRAY 20 — BLOOD-BRAIN BARRIER PERMEABILITY™

Serum Antibody

Assists in the assessment of increased risk of neurodegenerative disorders, including but not limited to multiple sclerosis, Lou Gehrig's disease, senile dementia, Alzheimer's disease, Parkinson's disease, epilepsy and stroke. Helps in the early investigation of contact sports-related Traumatic Brain Injury, and evaluates the breach of Blood-Brain Barrier caused by stress, trauma or environmental triggers, even in the absence of apparent concussion or brain injury.

Antigens Tested (IgG + IgA combined, IgM tested separately for each antigen)

- Blood-Brain Barrier Protein

ARRAY 22



ARRAY 22 — IRRITABLE BOWEL/SIBO SCREEN™

Serum Antibody

Identifies the release of bacterial cytotoxins by the large intestinal bacteria that cause irritable bowels and/or SIBO and evaluates a breakdown of the intestinal barrier.

Antigens Tested

- Bacterial Cytotoxins - IgG
- Bacterial Cytotoxins - IgA
- Bacterial Cytotoxins - IgM
- Cytoskeletal Proteins - IgG
- Cytoskeletal Proteins - IgA
- Cytoskeletal Proteins - IgM

ENVIRONMENTAL TRIGGERS TESTING

ARRAY 3X



ARRAY 3X — WHEAT/GLUTEN PROTEOME REACTIVITY & AUTOIMMUNITY™

Serum Antibody

A comprehensive Wheat/Gluten reactivity test, which assists in the identification of wheat reactivity, non-celiac gluten sensitivity, Celiac disease, food opioid reactivity, intestinal barrier damage and wheat-related autoimmunity.

Antigens Tested (IgG and IgA tested separately for each antigen)

- Wheat
- Wheat Germ Agglutinin
- Non-Gluten Proteins - A
- Non-Gluten Proteins - B
- Gliadin Toxic Peptides
- Native + Deamidated Alpha-Gliadin-33-mer
- Alpha-Gliadin-17-mer
- Gamma-Gliadin-15-mer
- Omega-Gliadin-17-mer
- Glutenin-21-mer
- Gluteomorphin + Prodynorphin
- Gliadin-Transglutaminase Complex
- Microbial Transglutaminase
- Transglutaminase-2
- Transglutaminase-3
- Transglutaminase-6

ARRAY 4



ARRAY 4 — GLUTEN-ASSOCIATED CROSS-REACTIVE FOODS & FOODS SENSITIVITY™

Serum Antibody

Identifies reactivity to foods known to cross-react to gliadin and reactivity to newly introduced foods on a gluten-free diet.

Antigens Tested (IgG + IgA combined)

GLUTEN-CONTAINING/GLUTEN-CONTAMINATED

- Rye, Barley, Spelt, Polish Wheat
- Instant Coffee

GLIADIN CROSS-REACTIVE FOODS

- Cow's Milk
- Alpha-Casein + Beta-Casein
- Casomorphin
- Milk Butyrophilin
- Whey Protein
- Milk Chocolate
- Yeast
- Oats
- Millet
- Rice
- Corn

NEWLY-INTRODUCED AND/OR OVER-CONSUMED ON GFD

- Buckwheat
- Sorghum
- Hemp
- Sesame
- Amaranth
- Quinoa
- Tapioca
- Teff
- Potato

COMMON ANTIGENIC FOODS

- Egg, raw + cooked
- Soy

ARRAY 10



ARRAY 10 — MULTIPLE FOOD IMMUNE REACTIVITY SCREEN™

Serum Antibody

This unique, revolutionary panel measures reactivity to 180 food antigens in the cooked, raw, modified or processed form on the same panel. Assists in early detection of dietary-related triggers of autoimmune reactivity and monitors the effectiveness of customized dietary protocols.

Antigens Tested (IgG + IgA combined)

DAIRY AND EGGS, MODIFIED

- Egg White, cooked
- Egg Yolk, cooked
- Goat's Milk
- Soft Cheese + Hard Cheese
- Yogurt

GRAINS, RAW AND MODIFIED

- Rice, white + brown, cooked
- Rice Cake
- Rice Protein
- Rice Endochitinase
- Wild Rice, cooked
- Wheat + Alpha-Gliadins

BEANS AND LEGUMES, MODIFIED

- Black Bean, cooked
- Bean Agglutinins
- Dark Chocolate + Cocoa
- Fava Bean, cooked
- Garbanzo Bean, cooked
- Kidney Bean, cooked
- Lentil, cooked
- Lentil Lectin
- Lima Bean, cooked
- Pinto Bean, cooked
- Soybean Agglutinin
- Soybean Oleosin + Aquaporin
- Soy Sauce, gluten-free
- Tofu

NUTS AND SEEDS, RAW

AND MODIFIED

- Almond
- Almond, roasted
- Brazil Nut, raw + roasted
- Cashew
- Cashew, roasted
- Cashew Vicilin
- Chia Seed
- Flax Seed
- Hazelnut, raw + roasted
- Macadamia Nut, raw + roasted
- Mustard Seed
- Pecan, raw + roasted
- Peanut, roasted
- Peanut Butter
- Peanut Agglutinin
- Peanut Oleosin
- Pistachio, raw + roasted
- Pumpkin Seeds, roasted
- Sesame Albumin

- Sesame Oleosin
- Sunflower Seeds, roasted
- Walnut

VEGETABLES, RAW AND MODIFIED

- Artichoke, cooked
- Asparagus
- Asparagus, cooked
- Beet, cooked
- Bell Pepper
- Broccoli
- Broccoli, cooked
- Brussels Sprouts, cooked
- Cabbage, red + green
- Cabbage, red + green, cooked
- Canola Oleosin
- Carrot
- Carrot, cooked
- Cauliflower, cooked
- Celery
- Chili Pepper
- Corn + Aquaporin, cooked
- Popped Corn
- Corn Oleosin
- Cucumber, pickled
- Eggplant, cooked
- Garlic
- Garlic, cooked
- Green Bean, cooked
- Lettuce
- Mushroom, raw + cooked
- Okra, cooked
- Olive, green + black, pickled
- Onion + Scallion
- Onion + Scallion, cooked
- Pea, cooked
- Pea Protein
- Pea Lectin
- Potato, white, cooked (baked)
- Potato, white, cooked (fried)
- Pumpkin + Squash, cooked
- Radish
- Safflower + Sunflower Oleosin
- Seaweed
- Spinach + Aquaporin
- Tomato + Aquaporin
- Tomato Paste
- Yam + Sweet Potato, cooked
- Zucchini, cooked

FRUIT, RAW AND MODIFIED

- Apple
- Apple Cider
- Apricot
- Avocado
- Banana
- Banana, cooked
- Latex Hevein
- Blueberry
- Cantaloupe + Honeydew Melon
- Cherry
- Coconut, meat + water
- Cranberry
- Date
- Fig
- Grape, red + green
- Red Wine
- White Wine
- Grapefruit
- Kiwi
- Lemon + Lime
- Mango
- Orange
- Orange Juice
- Papaya
- Peach + Nectarine
- Pear
- Pineapple
- Pineapple Bromelain
- Plum
- Pomegranate
- Strawberry
- Watermelon

FISH AND SEAFOOD, RAW AND MODIFIED

- Cod, cooked
- Halibut, cooked
- Mackerel, cooked
- Red Snapper, cooked
- Salmon
- Salmon, cooked
- Sardine + Anchovy, cooked
- Sea Bass, cooked
- Tilapia, cooked
- Trout, cooked
- Tuna
- Tuna, cooked
- Whitefish, cooked
- Crab + Lobster, cooked
- Imitation Crab, cooked

- Clam, cooked
- Oyster, cooked
- Scallops, cooked
- Squid (Calamari), cooked
- Shrimp, cooked
- Shrimp Tropomyosin
- Parvalbumin

MEAT, MODIFIED

- Beef, cooked medium
- Chicken, cooked
- Lamb, cooked
- Pork, cooked
- Turkey, cooked
- Gelatin
- Meat Glue

HERBS, RAW

- Basil
- Cilantro
- Cumin
- Dill
- Mint
- Oregano
- Parsley
- Rosemary
- Thyme

SPICES, RAW

- Cinnamon
- Clove
- Ginger
- Nutmeg
- Paprika
- Turmeric (Curcumin)
- Vanilla

GUMS

- Beta-Glucan
- Carrageenan
- Gum Guar
- Gum Tragacanth
- Locust Bean Gum
- Mastic Gum + Gum Arabic
- Xanthan Gum

BREWED BEVERAGES

AND ADDITIVES

- Coffee Bean Protein, brewed
- Black Tea, brewed
- Green Tea, brewed
- Honey, raw + processed
- Food Coloring

ARRAY 10-90



ARRAY 10-90 — MULTIPLE FOOD IMMUNE REACTIVITY SCREEN™

Serum Antibody

Designed to give you the same unique, revolutionary features you get from Array 10 with two options that allow flexibility. Array 10-90 measures reactivity to 90 food antigens most commonly consumed from our Array 10, in cooked, raw, modified or processed forms. The Array 10-90 also features all Cyrex's proprietary food testing technologies.

Antigens Tested (IgG + IgA combined)

DAIRY AND EGGS, MODIFIED

- Egg White, cooked
- Egg Yolk, cooked
- Soft Cheese + Hard Cheese
- Yogurt

GRAINS, RAW AND MODIFIED

- Rice, white + brown, cooked
- Wild Rice, cooked
- Wheat + Alpha-Gliadins

BEANS AND LEGUMES, MODIFIED

- Black Bean, cooked
- Bean Agglutinins
- Dark Chocolate + Cocoa
- Garbanzo Bean, cooked
- Kidney Bean, cooked
- Lentil, cooked
- Pinto Bean, cooked
- Soy Sauce, gluten-free
- Tofu

NUTS AND SEEDS, RAW AND MODIFIED

- Almond, roasted
- Cashew
- Flax Seed
- Mustard Seed
- Peanut, roasted
- Sesame Oleosin
- Sunflower Seeds, roasted
- Walnut

VEGETABLES, RAW AND MODIFIED

- Asparagus, cooked
- Beet, cooked
- Bell Pepper
- Broccoli
- Cabbage, red + green
- Canola Oleosin
- Carrot
- Cauliflower, cooked

- Celery
- Chili Pepper
- Popped Corn
- Eggplant, cooked
- Garlic
- Green Bean, cooked
- Lettuce
- Mushroom, raw + cooked
- Onion + Scallion
- Pea, cooked
- Potato, white, cooked (fried)
- Pumpkin + Squash, cooked
- Radish
- Spinach + Aquaporin
- Tomato Paste
- Yam + Sweet Potato, cooked
- Zucchini, cooked

FRUIT, RAW AND MODIFIED

- Apple
- Avocado
- Banana
- Blueberry
- Cantaloupe + Honeydew Melon
- Coconut, meat + water
- Grape, red + green
- Lemon + Lime
- Orange
- Peach + Nectarine
- Pear
- Pineapple
- Strawberry
- Watermelon

FISH AND SEAFOOD, RAW AND MODIFIED

- Cod, cooked
- Salmon, cooked
- Tuna, raw
- Tuna, cooked

- Whitefish, cooked
- Crab + Lobster, cooked
- Clam, cooked
- Shrimp, cooked
- Shrimp Tropomyosin

MEAT, MODIFIED

- Beef, cooked medium
- Chicken, cooked
- Pork, cooked
- Turkey, cooked
- Meat Glue

HERBS, RAW

- Basil
- Cilantro
- Oregano
- Parsley
- Rosemary

SPICES RAW

- Cinnamon
- Ginger
- Turmeric (Curcumin)
- Vanilla

GUMS

- Carrageenan
- Xanthan Gum

BREWED BEVERAGES AND ADDITIVES

- Honey, raw + processed
- Food Coloring

ARRAY 10-90X



ARRAY 10-90X — MULTIPLE FOOD IMMUNE REACTIVITY SCREEN™

Serum Antibody

Array 10-90X is available as an add-on test only to Array 10-90. It includes the remaining 90 food antigens from the Array 10.

Antigens Tested (IgG + IgA combined)

DAIRY AND EGGS, MODIFIED

- Goat's Milk

GRAINS, RAW AND MODIFIED

- Rice Cake
- Rice Protein
- Rice Endochitinase

BEANS AND LEGUMES, MODIFIED

- Fava Bean, cooked
- Lentil Lectin
- Lima Bean, cooked
- Soybean Agglutinin
- Soybean Oleosin + Aquaporin

NUTS AND SEEDS, RAW AND MODIFIED

- Almond
- Brazil Nut, raw + roasted
- Cashew, roasted
- Cashew Vicilin
- Chia Seed
- Hazelnut, raw + roasted
- Macadamia Nut, raw + roasted
- Pecan, raw + roasted
- Peanut Butter
- Peanut Agglutinin
- Peanut Oleosin
- Pistachio, raw + roasted
- Pumpkin Seeds, roasted
- Sesame Albumin

VEGETABLES, RAW AND MODIFIED

- Artichoke, cooked
- Asparagus
- Broccoli, cooked
- Brussels Sprouts, cooked
- Cabbage, red + green, cooked
- Carrot, cooked
- Corn + Aquaporin, cooked

- Corn Oleosin
- Cucumber, pickled
- Garlic, cooked
- Okra, cooked
- Olive, green + black, pickled
- Onion + Scallion, cooked
- Pea Protein
- Pea Lectin
- Potato, white, cooked (baked)
- Safflower + Sunflower Oleosin
- Seaweed
- Tomato + Aquaporin

FRUIT, RAW AND MODIFIED

- Apple Cider
- Apricot
- Banana, cooked
- Latex Hevein
- Cherry
- Cranberry
- Date
- Fig
- Red Wine
- White Wine
- Grapefruit
- Kiwi
- Mango
- Orange Juice
- Papaya
- Pineapple Bromelain
- Plum
- Pomegranate

FISH AND SEAFOOD, RAW AND MODIFIED

- Halibut, cooked
- Mackerel, cooked
- Red Snapper, cooked

- Salmon
- Sardine + Anchovy, cooked
- Sea Bass, cooked
- Tilapia, cooked
- Trout, cooked
- Imitation Crab, cooked
- Oyster, cooked
- Scallops, cooked
- Squid (Calamari), cooked
- Parvalbumin

MEAT, MODIFIED

- Lamb, cooked
- Gelatin

HERBS, RAW

- Cumin
- Dill
- Mint
- Thyme

SPICES RAW

- Clove
- Nutmeg
- Paprika

GUMS

- Beta-Glucan
- Gum Guar
- Gum Tragacanth
- Locust Bean Gum
- Mastic Gum + Gum Arabic

BREWED BEVERAGES AND ADDITIVES

- Coffee Bean Protein, brewed
- Black Tea, brewed
- Green Tea, brewed

ARRAY
11



ARRAY 11 — CHEMICAL IMMUNE REACTIVITY SCREEN™

Serum Antibody

Identifies body burden of chemicals bound to human tissues, which may lead to autoimmune reactivity.

Antigens Tested (IgG + IgA combined, IgM tested separately for each antigen)

- Aflatoxins
- Formaldehyde + Glutaraldehyde
- Isocyanate
- Trimellitic + Phthalic Anhydrides
- Benzene Ring Compounds
- BPA Binding Protein
- Bisphenol A
- Tetrabromobisphenol A
- Tetrachloroethylene
- Parabens
- Mercury Compounds
- Mixed Heavy Metals (Nickel, Cobalt, Cadmium, Lead, Arsenic)

ARRAY
12



ARRAY 12 — PATHOGEN-ASSOCIATED IMMUNE REACTIVITY SCREEN™

Serum Antibody

Detect immune reaction to key pathogens that may lead to multiple autoimmune reactivities.

Antigens Tested (IgG)

- Porphyromonas gingivalis
- Streptococcus mutans
- Helicobacter pylori
- Campylobacter jejuni
- Yersinia enterocolitica
- Clostridium difficile
- Candida albicans
- Rotavirus
- Entamoeba histolytica
- Giardia lamblia
- Cryptosporidium
- Blastocystis hominis
- Human + Chlamydia HSP-60
- Chlamydias
- Streptozymes
- Streptococcal M Protein
- Mycoplasmas
- Acinetobacter
- Klebsiella
- Mycobacterium avium
- Aspergillus
- Penicillium
- Stachybotrys chartarum
- Citrullinated EBV
- CYP450, mimic Hepatitis C Peptide
- Cytomegalovirus
- Human Herpesvirus-6
- Borrelia burgdorferi
- Babesia + Ehrlichia + Bartonella

Detection of high levels of IgG antibody against the tested pathogens is not indicative of acute infection.

PREDICTIVE ANTIBODIES OF AUTOIMMUNE REACTIVITY TESTING

ARRAY 5



ARRAY 5 — MULTIPLE AUTOIMMUNE REACTIVITY SCREEN™

Serum Antibody

Measures predictive autoantibodies, some of which can appear up to 10 years before clinical symptoms. Efficiently and economically assesses possible tissue damage to multiple organs of the body.

Antigens Tested (IgG + IgA combined)

- Parietal Cell + ATPase
- Intrinsic Factor
- ASCA + ANCA
- Tropomyosin
- Thyroglobulin
- Thyroid Peroxidase (TPO)
- 21 Hydroxylase (Adrenal Cortex)
- Myocardial Peptide
- Alpha-Myosin
- Phospholipid
- Platelet Glycoprotein
- Ovary/Testis[†]
- Fibulin
- Collagen Complex
- Arthritic Peptide
- Osteocyte
- Cytochrome P450 (Hepatocyte)
- Insulin + Islet Cell Antigen
- Glutamic Acid Decarboxylase 65 (GAD 65)
- Myelin Basic Protein
- Asialoganglioside
- Alpha + Beta Tubulin
- Cerebellar
- Synapsin

[†]Ovary and Testis are tested together to avoid any confusion arising out of potential cross-reactivity.

ARRAY 6



ARRAY 6 — DIABETES AUTOIMMUNE REACTIVITY SCREEN™

Serum Antibody

Assesses markers of the autoimmune components of diabetes. Can be used as a tool to identify reactivity prior to the onset of diabetes, and to monitor a patient who is already diagnosed with diabetes to see how well treatment protocols are working.

Antigens Tested (IgG + IgA combined)

- Glutamic Acid Decarboxylase 65 (GAD65)
- Insulin + Islet Cell Antigen

ARRAY 7



ARRAY 7 — NEUROLOGICAL AUTOIMMUNE REACTIVITY SCREEN™

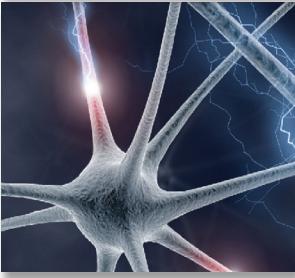
Serum Antibody

Assists in the early detection of neuro-autoimmunity, evaluates severity of the autoimmune response, and assists in monitoring the effectiveness of related treatment protocols.

Antigens Tested (IgG + IgA combined)

- Myelin Basic Protein
- Asialoganglioside
- Alpha + Beta Tubulin
- Cerebellar
- Synapsin

ARRAY 7X



ARRAY 7X — NEUROLOGICAL AUTOIMMUNE REACTIVITY SCREEN™ — EXPANDED

Serum Antibody

By including IgM, Array 7X helps with early detection of neuro-autoimmune reactivity, the identification of multi-focal motor neuropathy, lower motor neuron syndromes, earlier development of relapses in multiple sclerosis and chronic inflammatory demyelinating polyneuropathy, and as a tool to monitor the effectiveness of related treatment protocols.

Antigens Tested (IgG + IgA combined, IgM tested separately for each antigen)

- Myelin Basic Protein
- Asialoganglioside
- Alpha + Beta Tubulin
- Cerebellar
- Synapsin

ARRAY 8



ARRAY 8 — JOINT AUTOIMMUNE REACTIVITY SCREEN™

Serum Antibody

Assists in the early detection of connective tissue disorders, and in monitoring the effectiveness of related treatment protocols.

Antigens Tested (IgG + IgA combined)

- Arthritic Peptide
- Collagen Complex
- Fibulin

SERUM TEST BUNDLES

ARRAY

ARRAY 2, 3X, 4 COMBO — THE GUT FOOD COMBO

Consists of: **Array 2** - Intestinal Antigenic Permeability Screen™
Array 3X - Wheat/Gluten Proteome Reactivity & Autoimmunity™
Array 4 - Gluten-Associated Cross-Reactive Foods & Foods Sensitivity™

MUCOSAL IMMUNE RESPONSE TESTING

ARRAY 14

ARRAY 14 — MUCOSAL IMMUNE REACTIVITY SCREEN™

Saliva Antibody

The mucosal immune system is the body's first line of defense against antigen invasion.

Antigens Tested (IgA + IgM combined)

- Total Secretory IgA
- Lipopolysaccharides
- Occludin/Zonulin
- Actomyosin
- ASCA/ANCA
- Calprotectin
- Native + Deamidated Alpha-Gliadin-33-mer
- Gamma-Gliadin-15-mer
- Glutenin-21-mer
- Gluteomorphin
- Wheat Germ Agglutinin
- Transglutaminase-2
- Egg
- Soy
- Corn
- Alpha-Casein + Beta-Casein
- Casomorphin
- Aflatoxin
- Bisphenol-A
- Mercury
- Mixed Heavy Metals
- Rotavirus
- Myelin Basic Protein
- Blood-Brain Barrier Protein
- Immune Complex

Available in US and Canada Only. Non-orderable for NDs in Ontario, Canada.

SPECIMEN REQUIREMENTS

SPECIMEN REQUIREMENT FOR ALL SERUM TESTS



Collect: 5 mL red top or tiger top

Transport: 2 mL serum

Only one collection required for all tests.

Multiple add-ons to existing orders will be accepted within 21 days of specimen receipt; after that time, specimens will be frozen and only one add-on request, which can consist of several arrays, can be processed between days 22-89. Specimens are stored for 90 days.

SPECIMEN REQUIREMENT FOR MUCOSAL TESTS



Collect: 4 mL blue top

Transport: 4 mL saliva

Only one collection required for all tests.

For more information, contact your Cyrex Representative at (877) 772-9739 or visit us at www.JoinCyrex.com.



Phone: 877-772-9739 • 602-759-1245

www.JoinCyrex.com